

S.M.S.L



DA-6

使用说明书



本说明书的内容可能会随版本更改, 如有变动, 恕不另行通知

Ver 1.0

安全注意事项

- 请将本音响系统安装在通风良好、阴凉、干燥、干净的位置，远离直射阳光热源、振动、灰尘、潮湿或寒冷。
- 只能使用本机指定的电压。使用高于指定数值的电压很危险，而且可能导致火灾，损坏本机或造成人身伤害。对于使用高于指定电压造成的任何损害，我司将不负任何责任。
- 不要试图自行改造或修理本机。如果需要任何服务，请与销售或者我司客服人员联系。不管有任何理由，都没有打开机壳的必要。
- 如果打算长时间不使用本机（比如度假时），请从墙壁交流电源插座上断开电源线的连接。

重要提示：

本说明书所提到的产品规格和资讯仅供参考。如有内容更新，恕不另行通知。

保修条款

一、服务期限

佛山双木三林科技有限公司承诺产品的良好品质，产品自售出之后7天内正常使用情况下出现故障，客户可以选择退货或者保修（不影响二次销售才可退货）。正常使用一年内出现故障可以免费保修。

二、购买日期以销售商开出的购机发票或收据日期为准，网购可以交易截图为准。

三、有以下情况都不能享受“三包”服务

1. 一切人为因素损坏，包括非正常工作环境下使用或不按照说明书使用。
2. 用户私自拆机、改装、维修。
3. 使用非指定或许可的配件造成损坏的。
4. 机身的QC或保修贴损毁。
5. 不能出示有效购机凭证。
6. 不属于本公司产品。

四、保修方式为送修

此条款只适于中国大陆，其它地区请参考当地销售代理商的规定和国家法规。

产品特点

- 德国英飞凌新型碳化硅数字功率放大器芯片, 更高质的同时, 效率高达92%, 进一步降低能耗;
- 电子音量控制, 杜绝电位器调音量时的杂音;
- 预置多种EQ音效模式;
- 具备音效调节, 高低音单独可调;
- 3种模拟环绕声音效;
- 大功率电源适配器, 适配音频的动态响应;
- 极致的小体积, 放置更加灵活;
- 高品质镀金音频连接器;
- 一体式铝合金CNC外壳, 更美观, 散热更好!
- 配备全功能高品质遥控器。

技术参数

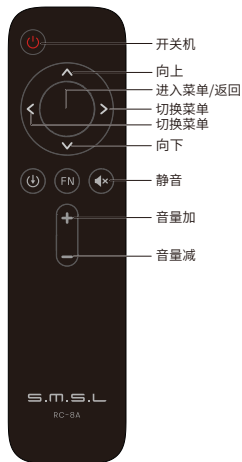
输出功率	70W x 2(4Ω)
频率响应	20Hz-40KHz
高低音调节范围	-14dB ~ +14dB
总谐波失真	0.004%
通道分离	91dB(1KHz)
输入灵敏度	400mVms
信噪比	103dB
消耗功率	36W
尺寸	140X28X110mm(WxHxD)
重量.....	0.35kg

规格时有变更,恕不另行通知。

关于遥控器

- 如果遥控器距离本机很近时操作仍无效，请用新电池更换。
- 如果要长时间不使用遥控器，请取出遥控器的电池。
- 按照电池处置的地方性法规处置废旧电池。

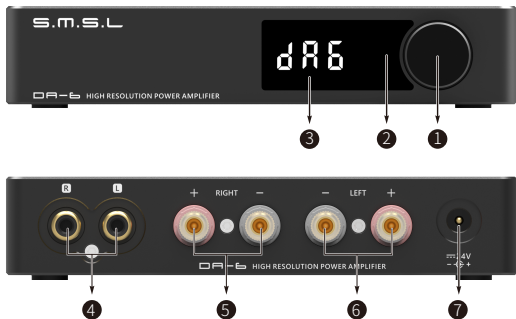
遥控器的使用



注意

遥控器请使用2节7号(AAA)电池

部件介绍



1 旋钮

2 红外接收窗

3 显示屏

4 RCA输入

5 右声道输出

6 左声道输出

7 电源输入

操作说明

界面介绍

- 开机时会显示 **DA6** 意思为DA-6。
- EQ调节：
 - **E 0** Direct (关闭EQ)
 - **E 1** Tone (高低音调节)
 - **E 2** Bass (低音加强音效)
 - **E 3** Super Bass (低音超强音效)
 - **E 4** Rock (摇滚乐音效)
 - **E 5** Soft (柔和音效)
 - **E 6** Clear (清晰音效)
- 在低音调节时会显示 **b-7** ← **b-0** → **b 7**
- 在高音调节时会显示 **t-7** ← **t-0** → **t 7**
- 在亮度调节时会显示 **bl 1** , **bl 2** ,....., **bl 8** 。
- 3种模拟环绕声音效 **SU0** , **SU 1** , **SU 2** , **SU 3** ,
SU 0 为无环绕声音效。
- 音量显示 **-40** , **-39** ,....., **-00** 。

S.M.S.L



DA-6 USER MANUAL



The contents of this manual may be changed with the edition,
and are subject to change without notice.

Ver 1.0

Safety Notes

- Install this unit in a well ventilated, cool, dry, clean place-away from direct sunlight, heat sources, vibration, dust, moisture, or cold..
- Use the voltage specified on this unit Only. Using this unit with a higher voltage than specified is dangerous and may cause fire , damage to this unit, or personal injury. Our company will not be held responsible for any damage resulting from the use of this unit with a voltage other than that specified.
- Do not attempt to modify or fix this unit by yourself. Contact alesperson or customer service when any service is needed. The cabinet should never be opened for any reason.
- When not planning to use this unit for long periods of time (i.e. when going on vacation), disconnect the power cable from the AC wall outlet.

Important note:

The product specifications and information mentioned in this manual are for reference only. The content of this manual is subject to change without notice.

Warranty Terms

1.The Term of Service

Foshan Shuangmusanlin Technology Co., Ltd promises to offer good-quality products. If the product is broken in 7 days after purchasing when you use it normally, you can choose to send it back for return, replacement or repairing (only the product does not affect the second sales can be returned). Repairing for free in one year if you use it normally.

2.Date of purchase is in accordance with the date on invoice or receipt used by seller, and if you buy it on line, you can show the screenshot of trade.

3.If an inappropriate usage causes the unit damaged, the warranty will be void. As below.

- All damages by inappropriate use, including using it under non-normal working environment or without following the instructions.
- Dismantling, refitting, repairing by user in private.
- Causing damage by using some fittings instead of the designative or accredited ones.
- Cannot provide credible proof of purchase.

4.Sending it back to our company for repairing.

5.Contact your S.M.S.L Audio reseller for a return or replacement.

Features

- German Infineon's new technology class D power amplifier chip, higher quality, efficiency up to 92%, further reducing power consumption;
- Electronic volume control, without the potential noise of traditional resistor volume control noise when adjusting the volume.
-
- With tone adjustment, the BASS and TREBLE can be adjusted separately.
- High current adapter adapts to the dynamic response of audio.
- Extremely small size, more flexible placement.



Specifications

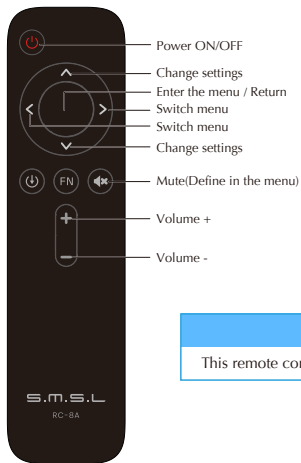
Output power	70W x 2(4Ω)
Frequency response	20Hz-40KHz
BASS or TREBLE GAIN	-14dB ~ +14dB
THD+N	0.004%
Channel separation	91dB(1KHz)
Input sensitivity	400mVms
SNR	103dB
Power consumption.....	36W
Dimensions	140X28X110mm(WxHxD)
Weight	0.35kg

Specifications are subject to change without notice.

Remote control

- Install 2 x AAA batteries as instructions.
- When using the remote control, point it toward the remote control signal receiver on the main unit from a distance of 5 m (16 ft) or less. Do not place obstructions between the main unit and the remote control.
- The remote control might not work if the remote control signal receiver on the unit is exposed to direct sunlight or bright light. If this occurs, try moving the unit. Beware that use of this remote control could cause the unintentional operation of other devices that can be controlled by infra.

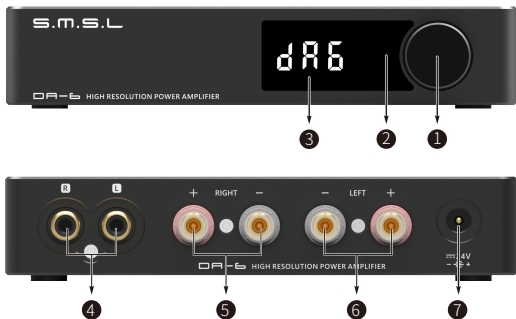
Operating the remote control



Note

This remote controller use 2 x R03/AAA batteries.

Display Interface and Instructions



1 Knob

4 RCA input

7 Power input

2 Remote window

5 Right channel output

3 Display

6 Left channel output

User interface

Main

- When it is turned on, it will show **dB6**
- Display in bass adjustment **b-7** ← **b-0** → **b 7**
- Display in treble adjustment **t-7** ← **t-0** → **t 7**
- Displayed in the brightness adjustment **bL1** , **bL2** **bL8**
- Volume display **-40** , **-39** **-00**